



Resilient Cities & Communities

Visionary People. Vibrant Places. Regenerative Futures.

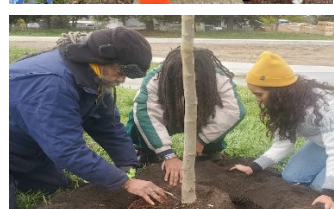
2025 Impact Report: Your Vision. Your Impact. A Resilient Metro.

Sean Gosiewski, ED 612 250-0389 sean@rccmn.co Gladys Mejia, PD gladys@rccmn.co Wynfred Russell, Chair wynfred@rccmn.co

Thank you for co-imagining and actively building our **metro-wide collective impact network!** In 2025, you — our urban and suburban volunteer teams, nonprofit partners, and business and city leaders—were the engine behind making change in your communities. With your support, we are preparing our neighborhoods and cities for whatever comes next, while ensuring a welcoming space for our immigrant communities. Thanks for making a year-end gift to deepen our collective impacts! Thanks! Sean & Gladys

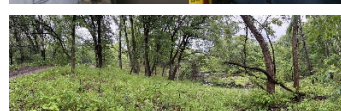
Individual Memberships <https://rccmn.co/donate/> **Organizations** <https://rccmn.co/become-an-rcc-sponsor-partner/>

Building Stronger Neighborhoods, together in 2025



- **Warmer (and cooler) homes & community:** Your commitment helped neighbors move from energy audits to completed home weatherization & new heat pumps with quality contractors www.rccmn.co/buildings/
- **Greener Multifamily buildings, stronger communities:** You connected renters and building owners, leading to increased recycling rates, energy efficiency improvements, and access to crucial 4D rent affordability tax credits. www.rccmn.co/greening-your-building
- **Healthier families at Little Earth:** You empowered families at Little Earth to improve indoor air quality and reduce asthma triggers in their homes. www.rccmn.co/indoor-air-quality/
- **A growing tree canopy:** Your volunteer hands planted, watered & cared for new trees, expanding our canopy in yards, parks, and schools www.rccmn.co/trees
- **Restoring natural areas:** Natural Area Steward volunteers pulled buckthorn & restored natives in regional parks www.rccmn.co/natural-areas-stewards

Expanding Our Reach for a Resilient Future, together in 2026



- **Stronger block connections & support for immigrant neighbors:** You shared food & supported immigrant community neighbors. www.rccmn.co/block-clubs/
- **Energy outreach across the metro:** Together we'll link green teams to follow Prospect Park's successful model to support neighbors across the metro to make home improvements. (Trib Story) www.rccmn.co/buildings/
- **Launching Green Careers!** Join us **Thurs Dec 11** <https://rccmn.co/green-jobs/>
- **Fresh food for all:** garden teams will meet in the spring to distribute compost, plants and raised beds & then grow and share fresh produce with neighbors. www.rccmn.co/gardens-food-pollinators
- **Keeping our lakes swimmable:** We'll co-host forums with neighborhood teams, MPRB and Public Works staff to plan next steps to reduce salt, trash and nutrient runoff and restore shorelines <https://rccmn.co/water>
- **Creating a zero-waste future:** Through our recycling, food waste reduction, and re-use we'll create a sustainable waste system www.rccmn.co/zero-waste/
- **Building a sustainable future:** Neighborhood/city/county teams will support developers to build affordable, natural-gas-free, multifamily buildings, condos and homes www.rccmn.co/21st-century-communities/