



## East Metro Cities Climate Action Conversation with

Commissions, City Staff & Elected Leaders from Anoka, Dakota, Ramsey & Washington County Cities

Thursday February 13, 6:30 pm to 8:30 pm at the Ramsey County Library - Roseville

*Discuss high impact actions our cities can take together to achieve our city's energy/climate goals.*

Workshop Resources & Next Steps posted at [www.afors.org/resilientcities/eastmetro](http://www.afors.org/resilientcities/eastmetro)

RSVP for future events at <http://resilientcitiescoalition.eventbrite.com>



### For Commission & Community Volunteers, City Staff, Elected Leaders, Student Leaders

6:00 p.m. **Student Commissioners, High School Environmental Club leaders** (pre event gathering)

6:30 p.m. **Updates from Cities** on their 2020 Environmental Commission work plans & on new resources

- **Ramsey County** – energy & resilience, active living
- **Met Council** – will give cities their community-wide GHG emissions data in June

7:00 p.m. **Small Group Conversations** on high impact actions our cities can take with our counties

- **Clean Energy** - Mary T'kach, Ramsey Co., Ted Redmond, Maplewood/Blue Dot [Resources](#)
- **Efficient Buildings** Kurt Schultz, St. Paul, Peter Lindstrom, Met Council, Terry Chaney, CEE [Resources](#)
- **Transportation/ Land Use** – Barb Thoman, Phil Muessig, GreenSteps [Resources](#)
- **Resilience/Adaptation/Sequestration/Regenerative Agriculture** (possible break out)

8:00 p.m. **Report outs from the Small Groups and Planning Our Next Steps**

8:30 p.m. **Networking** – new environmental commission volunteers can meet experienced volunteers

*Plan to bring a team of 3 or more from your city. Please bring your own water bottle. **Please RSVP for you and your team** at <https://feb13environmentalcommissionsramseyanokaco.eventbrite.com>*

*Co-Hosted by Ramsey County and the Alliance for Sustainability*



**Alliance for Sustainability**

Ecologically sound,  
economically viable,  
socially just and humane

### For questions contact:

Sean Gosiewski, Executive Director,  
Alliance for Sustainability  
612-250-0389 | [Sean@afors.org](mailto:Sean@afors.org)

**Resilient Cities and Communities Coalition** – We are cities and communities collaborating to achieve (and live) a resilient future by (1) Innovating Solutions, (2) Collaborating for Impact, (3) Engaging Community Stakeholders, (4) Shaping Public Policy, (5) Modeling Resilience to catalyze change

[www.allianceforsustainability.com/resilientcities](http://www.allianceforsustainability.com/resilientcities)



**MCKNIGHT FOUNDATION**

# Summary of High Impact Actions for Low Carbon Cities

Metro Cities Climate Action Conversations West Metro (4/22) East Metro (2/13) South Metro (May)

High impact actions our cities can take together to achieve our city's energy/climate goals

Resilient Cities and Communities Coalition [www.afors.org/resilientcities](http://www.afors.org/resilientcities)



## Efficient/ High Performance Buildings

- new building construction and building retrofits

Action 1. **Adopt an Energy Benchmarking Ordinance**

Action 2. **Commercial and Multifamily Engagement** – Partners in Energy, PACE, Cost Share Grants

Action 3. **Adopt a Sustainable Building Policy** - high performance construction with city investment

Action 3. **New Buildings - Educating Developers** Xcel design assistance, PACE \$ for Construction

Action 4. **Supporting Legislation or Statewide Policy Improvements** for better new construction

Action 6. **Truth in Sale of Housing Inspections** (adding an energy audit and energy score)

Action 7. **Combine multi-family Energy Improvements with 4d Affordable Housing Tax Incentives.**



## Clean Energy Supply

- city operations
- local solar
- community-wide access

Action 1. **Procuring Renewable Energy for City Operations**

Action 2. **Solar Ready Building Construction** (City owned buildings, businesses, multifamily)

Action 3. **Expanding Rooftop Solar within City** Businesses, Institutions (schools), Residents

Action 4. **Support Legislation (2020) with Centerpoint Energy to advance renewable natural gas** through integrated resource planning with the Public Utilities Commission

Action 5. **Support Legislation (2021) to Continue Xcel Energy's Solar Rewards**

Action 6. **Cities commenting on Xcel's Integrated Resource Plan (IRP) in April, May, June**

Action 7. **Additional Cities Helping with City of Minneapolis 100% Renewable Energy Resolution**



## Low Carbon Transportation/Land Use

- Electric Vehicles, Transit Investment
- Prioritize, bike, peds, transit
- Equitable, walkable, net zero TOD, in-fill redevelopment

Action 1. **Support sustained state, regional & county transit investments. Reprioritize spending.**

Action 2. **Prioritize pedestrians, bikes, transit in public right of ways** complete streets, reconstruction

Action 3. **Plan for successful & equitable in-fill redevelopment** - Net Zero, Equitable, Walkable, TOD

Action 4. **Support increased adoption of Electric Vehicles** - City Fleets, E.V. Charging Ordinance

Action 5. **Shared Mobility** - joint powers agreement between cities to regulate shared mobility – bikes, scooters, car sharing, autonomous vehicles



Alliance for  
Sustainability

Ecologically sound,  
economically viable,  
socially just and humane

### For questions contact:

Sean Gosiewski, Executive Director,  
Alliance for Sustainability  
612-250-0389 | [Sean@afors.org](mailto:Sean@afors.org)

## Resource People

### Overall Sustainability

- **Sean Gosiewski**, Alliance for Sustainability 612 250-0389 [sean@afors.org](mailto:sean@afors.org) Resilient Cities & Communities Coalition [www.afors.org/resilientcities](http://www.afors.org/resilientcities)
- **Philipp Muessig** GreenStep Cities 651-757-2594 [philipp.muessig@state.mn.us](mailto:philipp.muessig@state.mn.us) [www.mngreensteps.org](http://www.mngreensteps.org)
- **Mauricio Leon** Met Council Senior Researcher, 651 602-1146 [mauricio.leon@metc.state.mn.us](mailto:mauricio.leon@metc.state.mn.us)
- **Bill Barberg** Insight Formation Strategy Management 612 719-9700 [bill.barberg@insightformation.com](mailto:bill.barberg@insightformation.com)
- **Kevin Toskey** League of MN Cities Research Attorney (651) 281-1292 [ktoskey@lmc.org](mailto:ktoskey@lmc.org)

### Clean Energy Supply

- **Mary T'kach** Ramsey County Energy Manager (651) 775-4379 [mary.t'kach@co.ramsey.mn.us](mailto:mary.t'kach@co.ramsey.mn.us)
- **Ted Redmond**, Pale Blue Dot, 612-669-7056 [tredmond@paleblue-dot.org](mailto:tredmond@paleblue-dot.org) Solar feasibility studies, climate action planning [www.bluedotregister.org/community-services/#Resilient-Cities](http://www.bluedotregister.org/community-services/#Resilient-Cities)
- **Cameran Bailey**, SolSmart Advisor, Met Council 651.602.1212 [cameran.bailey@metc.state.mn.us](mailto:cameran.bailey@metc.state.mn.us)
- **Laura Brown** Novel Energy Solutions Energy 612-398-3400 [laura.brown@novelenergy.biz](mailto:laura.brown@novelenergy.biz)
- **Luke Hollenlamp** City of Minneapolis, Sustainability, 673-2349 [luke.hollenkamp@minneapolismn.gov](mailto:luke.hollenkamp@minneapolismn.gov)
- **Stacy Miller**, City of Minneapolis, Energy Policy Staff 612 673-3110 [stacy.miller@minneapolismn.gov](mailto:stacy.miller@minneapolismn.gov)
- **Barbara Jacobs** Energy Transition Lab, U of MN energy storage, 612-626-9541 [jaco0270@umn.edu](mailto:jaco0270@umn.edu)
- **Brian Ross**, Senior Program Director, Great Plains Institute, 612-767-7296, [brross@gpisd.net](mailto:brross@gpisd.net) [www.betterenergy.org/](http://www.betterenergy.org/) Energy Planning Tools [www.regionalindicatorismn.com/energy-planning](http://www.regionalindicatorismn.com/energy-planning) Solar Development Technical Assistance for Local Communities [www.betterenergy.org](http://www.betterenergy.org)

### High Performance BUILDINGS

- **Terry Chaney** CEE Home Energy Squad 651.328.6226 [tchaney@mncee.org](mailto:tchaney@mncee.org)
- **Peter Lindstrom** Metropolitan Council/ CERTS Buildings 612 625-9634 [plindstr@umn.edu](mailto:plindstr@umn.edu)
- **Kurt Schultz**, St. Paul, PED, Sustainable Building Policies 651 266-6590 [kurt.schultz@ci.stpaul.mn.us](mailto:kurt.schultz@ci.stpaul.mn.us)
- **Mary T'kach** Ramsey County Energy Manager (651) 775-4379 [mary.t'kach@co.ramsey.mn.us](mailto:mary.t'kach@co.ramsey.mn.us)
- **Ben Rabe**, Fresh Energy 651 726 7574 [rabe@fresh-energy.org](mailto:rabe@fresh-energy.org)
- **Megan Hoye** - Center for Energy and Environment 612-244-241 [mhoye@mncee.org](mailto:mhoye@mncee.org)
- **Richard Graves** CSBR U of MN (651) 605-5450 [rmgraves@umn.edu](mailto:rmgraves@umn.edu) <http://www.csbr.umn.edu/>
- **Leah Hiniker**, Energy Manager, Hennepin County Facilities, 612-543-1219 [leah.hiniker@hennepin.us](mailto:leah.hiniker@hennepin.us)

### Resilience, Adaptation, Regenerative Agriculture, Open Space

- **Marita Bujold** Just Food and Water (651) 646-0851 [marita.bujold@centurylink.net](mailto:marita.bujold@centurylink.net) [www.justfoodandwater.org/](http://www.justfoodandwater.org/)
- **Holly Jenkins** Wilderness In The City (651) 271-1257 [hollyc.jenkins@gmail.com](mailto:hollyc.jenkins@gmail.com) [www.wildernessinthecity.org](http://www.wildernessinthecity.org)
- **Pat Kerrigan** Organic Consumers Association 218-220-9622 [patrick@organicconsumers.org](mailto:patrick@organicconsumers.org) [www.organicconsumers.org](http://www.organicconsumers.org)
- **June Mathiowetz** Washington County, Legacy Fund Coordinator (651) 430-6016, [June.Mathiowetz@co.washington.mn.us](mailto:June.Mathiowetz@co.washington.mn.us)



## Transportation

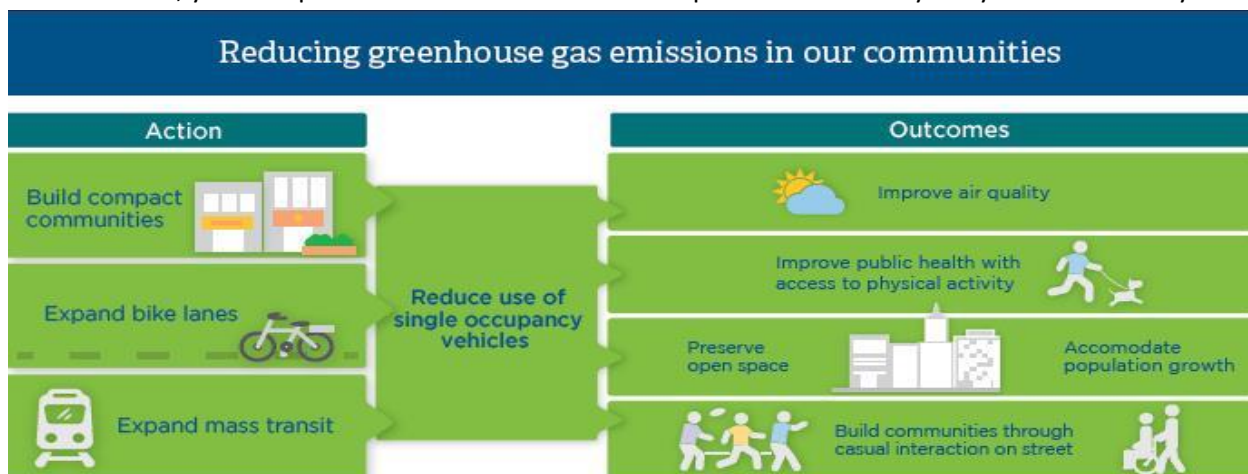
- **Phil Muessig**, MPCA, MN Greenstep Cities Coordinator; 651-757-2594, [Philipp.muessig@state.mn.us](mailto:Philipp.muessig@state.mn.us)  
List of model local ordinances <https://greenstep.pca.state.mn.us/index.php/page/ordinances>
- **Barb Thoman** GreenStep Cities Transportation 651 500-5958 [thomwell@bitstream.net](mailto:thomwell@bitstream.net)
- **Connie Bernardy** Ramsey County Active Living 651-748-2509 [Connie.Bernardy@CO.RAMSEY.MN.US](mailto:Connie.Bernardy@CO.RAMSEY.MN.US)
- **Peter Lindstrom** Ramsey County Active Living (612) 625-9634 [plindstr@umn.edu](mailto:plindstr@umn.edu)
- **Brian Ross**, Senior Program Director, Great Plains Institute, 612-767-7296, [bross@gpisd.net](mailto:bross@gpisd.net) Sample Suite of E.V. Ordinances for cities [www.driveelectricmn.org/communities/](http://www.driveelectricmn.org/communities/)
- **Jeffrey Meek** MNDOT Office of Sustainability 651-366-4263 [jeffrey.meek@state.mn.us](mailto:jeffrey.meek@state.mn.us) **Pathways to Decarbonizing Transportation Study** [www.dot.state.mn.us/sustainability/pathways.html](http://www.dot.state.mn.us/sustainability/pathways.html)
- **Frank Douma**, Humphrey School of Public Affairs Research Fellow, Director State and Local Policy Program [douma002@umn.edu](mailto:douma002@umn.edu) Self-Driving Vehicles on the Horizon; Ensure They're Accessible to All
- **Josh Johnson**, Advanced Mobility Minneapolis (612) 720-7969 [joshua.johnson2@minneapolisismn.gov](mailto:joshua.johnson2@minneapolisismn.gov)  
City of **Minneapolis Transportation Action Plan** <http://go.minneapolisismn.gov/>
- **Bill Dossett**, Twin Cities Shared Mobility Coalition (612) 747-4659 [bdossett@niceridemn.org](mailto:bdossett@niceridemn.org)  
[billdossett87@gmail.com](mailto:billdossett87@gmail.com) Bill is the Coalition's lead for Inter-Jurisdictional Coordination and is supporting metro cities to explore creating a joint powers agreement to regulate privately funded shared mobility services to be able to negotiate as a combined block of cities with Uber, Lyft, bike share and scooter services etc. <https://sharedusemobilitycenter.org/twin-cities-shared-mobility-collaborative/>
- **Mauricio León**, Metropolitan Council Senior Researcher, Regional Indicators 651 602-1146 [c](https://metrocity.org) Over the next two years, the Met Council will add **Metro Climate Stats** and a **Scenario Planning tool to the Energy and resilience planning resources** provided to cities during comp planning <https://metrocity.org/Handbook/Plan-Elements/Resilience.aspx>

## Active Living Ramsey Communities

<https://www.ramseycounty.us/residents/parks-recreation/active-living/get-involved>

Active Living Ramsey Communities exists as a broad network of volunteers, entrepreneurs and government officials across Ramsey County. It's easy to get involved! There are two main ways to participate as a member of the Active Living Ramsey Communities Coalition or the Biking and Walking Team.

- **Active Living Ramsey Communities Coalition** The coalition's mission is to create and promote environments that make it safe and convenient for people to be active in their daily lives. The coalition is comprised of community leaders, practitioners and advocates and focuses on policy, systems and environmental changes. Meetings are held quarterly from 2:30 - 4:30 p.m. at the Ramsey County Roseville.
- **Biking and Walking Team** The Biking and Walking Team helps create a multi-modal transportation system that provides safe, efficient and accessible facilities for pedestrians, bicyclists and transit users. By joining the team, you'll help create a connected network of pedestrian and bicycle systems in Ramsey County.





**Resilient Cities and Communities Coalition (RCCC) [www.afors.org/resilientcities](http://www.afors.org/resilientcities)**

In 2020 we are supporting leaders from 50+ cities to launch our **Resilient Cities and Communities Coalition** to collaborate to achieve their 2030 energy & resilience goals together through (1) **Innovating Solutions**, (2) **Collaborating for Impact**, (3) **Engaging Community Stakeholders**, (4) **Shaping Public Policy** and (5) **Modeling Resilience to catalyze change** to catalyze change regionally, nationally and globally. Below are cities we care currently reaching out to invite them to participate.

**Twin Cities**

**Anoka County** – Anoka, Blaine, Coon Rapids, Columbia Heights, Fridley

**Carver County** – Chanhassen, Chaska, Carver, Victoria

**Dakota County** – Apple Valley, Burnsville, Eagan, Inver Grove Heights, Lakeville, Rosemount, West St. Paul

**Hennepin County** – Minneapolis, Brooklyn Park, Brooklyn Center, Bloomington, Edina, Eden Prairie, Golden Valley, Hopkins, Maple Grove, Minnetonka, Richfield, Shorewood, St. Louis Park, Wayzata

**Ramsey County** – St. Paul, Maplewood, Falcon Heights, Roseville, Shoreview, St. Anthony Village, White Bear Lake

**Ramsey County** – St. Paul, Maplewood, Falcon Heights, Roseville, Shoreview, St. Anthony Village, Vadnais Heights, White Bear Lake

**Scott County** – Jordan, Belle Plaine, Shakopee, Prior Lake

**Washington County** – Oakdale, Lake Elmo, Mahtomedi, Marine on the St. Croix, Scandia, Stillwater, Woodbury

**State Wide**

**Goodhue Co.** – Redwing

**Freeborn Co.** – Albert Lea

**McLeod County** - Hutchinson

**Rice County** – Faribault, Northfield

**St. Louis County** – Duluth

**Winona County** – Winona

**A SPECIAL THANKS TO OUR SUPPORTERS**



**Individual Sustaining Members**

[www.afors.org/donate](http://www.afors.org/donate)



# Resilient Cities and Communities Coalition

*Cities & communities collaborating to achieve (& live) a resilient future.*

[www.afors.org/resilientcities](http://www.afors.org/resilientcities)

In 2020 we are supporting leaders from 50+ cities to launch our **Resilient Cities and Communities Coalition** to collaborate to achieve their 2030 climate, energy & resilience goals together through



**Goal 1: Innovating Solutions** - Supporting cities and communities in addressing their self-identified needs, challenges and opportunities for resilience

**Goal 2: Collaborating for Impact** - Convening cities to learn from each other, share best practices and collaborate to leverage resources and further each of their own efforts while creating (advancing?) proven, (effective) win-win-win solutions that accelerate and scale our impact together.



**Goal 3: Engaging Community Stakeholders** - Helping establish and mentor sustainability commissions in working with their cities and communities and partnering with residents, businesses and institutions in practicing and achieving community-wide resilience.



**Goal 4: Shaping Public Policy** - Cities and communities advocating together for state policies needed to accelerate local resilience.

**Goal 5: Modeling Resilience** - Modeling resilience to catalyze change regionally, nationally and globally

## Ways you and your city can become active with the RCCC

**City Teams** - Join or help form a volunteer team or environmental commission to support my city to take next steps toward sustainability & resilience. Hosting a community education event at a library, congregation, etc.

**County Teams** – help us bring together cities in your county to find ways cities and your county can work together to achieve your community-wide climate, energy and resilience goals.

**Topic Teams** – start or join a topic-specific work team with several cities to learn from and support one another – i.e. adopting sustainable building policies, low carbon transportation, etc.

**Policy Team** – help us monitor county, metro and state policy developments and help interested cities to make their voices heard on topics they care about, in partnership with allied NGOs & LMC

**RCCC Steering Committee** – Meet quarterly to guide the future development of county teams and topic teams to support cities to achieve their resilience goals together and engage additional cities.

**City Manager, Morris, MN** *Clean energy is non-partisan. It's about creating resilient cities and saving taxpayers money. It's about renewing our infrastructure while creating good careers. It's about protecting our air, water and soil for future generations.*



## Overview of Metro Climate Stats Research

Metro Climate Stats is a Metropolitan Council initiative to formalize the collection, distribution, and use of greenhouse gas emissions (GHG) data for comprehensive planning in 188 communities in the Twin Cities metropolitan region. The project will provide a baseline of greenhouse gas emissions data and planning scenario tools needed to track progress and inform decision-making by local governments and at the regional scale.

Metro Climate Stats aspires to be the climate data resource hub for the metropolitan region and to inform policymaking and the selection of strategies that move the metropolitan region toward meeting its greenhouse gas emissions goals as set out in Minnesota's *Next Generation Energy Act*.

The emissions inventory will allow the region and communities to track progress toward those goals, and the planning scenario tool will allow each community to quantify and visualize the impact on their community's GHG emissions by selecting from a suite of planning tools and implementation strategies. The policies and actions will cover a wide spectrum from building code policies, to multi-modal transportation infrastructure implementation, to land use policies, to water conservation strategies. Critical to the success of this project is the development of a coordinated and shared a regional approach to calculating emissions, collecting and formatting energy data from the variety of utility providers serving the region, and ensuring the value and ease of use of the tool and user interface.

### Greenhouse Gas Inventory

The Metro Climate Stats team will develop a regional GHG emissions inventory for local governments in the Twin Cities Region to make it easier for communities to incorporate climate mitigation into their planning.

Metro Climate Stats will prioritize in estimating the GHG emissions of activities on which the Metropolitan Council has influence. Obtaining insights from transportation and wastewater treatment is going to be prioritized. The second priority of Metro Climate Stats is to complete a full GHG inventory for all municipalities and counties in the region that could aggregate to the whole Metropolitan Service Area.

The scope of this first version of Metro Climate Stats GHG inventory includes the following sources:

- Electricity Use (Regionwide, Counties, and Municipalities)
- Stationary Fuel Combustion (Regionwide, Counties, and Municipalities)
  - Natural Gas
  - Other Stationary Fuels
- Passenger Vehicles (Regionwide, Counties, and Municipalities)
- Freight and Service Trucks (Regionwide, Counties, and Municipalities)
- Freight Rail (Regionwide and Counties)

390 Robert Street North | Saint Paul, MN 55101-1805  
P. 651.602.1000 | TTY. 651.291.0904 | [metrocouncil.org](http://metrocouncil.org)  
*An Equal Opportunity Employer*



- Transit (Regionwide, Counties, and Municipalities)
  - Buses (Scope 1)
  - Light rail (Electricity used for propulsion)
- Intercity Rail (Regionwide)
- Air Travel (Regionwide)
- Wastewater Emissions (Regionwide, Counties, and Municipalities)
- Community Generated Waste Emissions (Regionwide, Counties, and Municipalities)
- Livestock (Regionwide, Counties)

## Scenario Planning Tool

The Metro Climate Stats team will develop a regional GHG scenario planning tool for local governments in the Twin Cities Region to make it easier for communities to incorporate climate mitigation into their planning.

The purpose of the Greenhouse Gas Scenario Planning Tool is to provide local governments with data analytics that enables them to make informed data-based climate mitigation planning. The tool will provide a forecast of emissions in the region for future decades and insights on how different mitigation strategies could impact the forecasted emissions.

Once the Council has completed the task of developing a greenhouse gas inventory (around the Fall of 2019) for cities, townships, and counties within the 7-county metro region, the step that follows is to make data useful to communities.

The Scenario Planning tool will focus on strategies related to sustainable mobility and land use. The tools will provide a forecast of GHG emissions under the Business-as-Usual scenario to the years 2030, and 2040.

Examples of questions that might be answered with a scenario planning tool are:


- What are the relative benefits and costs for a community of investing in more multimodal transport infrastructure?
- How could higher/lower density affect sustainability in a community?
- How much electrification of vehicles needs to happen for our region to meet its carbon dioxide reduction goals?
- How could we reduce reliance on passenger vehicles?
- What are the best pathways for communities to reduce their emissions in the next decades?

## Questions?

Please contact Mauricio Leon (Mauricio.Leon@metc.state.mn.us), Senior Researcher if you are interested in learning more about the Metropolitan Council research on Climate Change Mitigation.



## Let's Create Sample Strategy Maps for Cities to Achieve Their Climate & Resilience Goals

	<p><b>Goal - provide cities with sample strategy maps</b>                  (adjusted for city types)                  that city teams can modify and implement from 2020 to 2030                  to meet their new city-wide <b>2040 comprehensive plan resilience goals</b>                  (mitigation, adaptation and sequestration)                  while creating co-benefits for the three E's</p>
---	---

City teams can then adapt/ modify the sample strategy maps and implement them 2020 to 2030 to meet their city-wide **2040 comprehensive plan resilience goals** (mitigation, adaptation sequestration)

	<b>City Ordinances/ Policies</b>	<b>Projects – new buildings, capital investments, one time investments</b>	<b>Campaigns – Behavior change residents and businesses</b>	<b>State Level Policies</b>
<b>(1) Clean energy – solar, storage, smart grid, etc.</b>				
<b>(2) Efficient buildings</b>				
<b>(3) Transportation/ Land use/ VMT/ electrification</b>				
<b>(4) Consumption/ recycling/ resource recovery</b>				
<b>(5) Resilience/adaptation sequestration/ forestry/ pollinators/ Ecosystems/ Food</b>				

## Let's Create Sample Strategy Maps for Cities to Achieve Their Climate & Resilience Goals

### Opportunities/Needs

- **Cities want to take deeper actions** – starting in 2020 - at least 30 metro cities, plus Northfield, Faribault, St. Cloud, Duluth, Rochester, Winona, Redwing, etc. want to deepen the actions they are taking in 2020 to get on track to achieve their new city-wide **2040 comp plan resilience goals**
- **Metro cities will receive their community wide GHG data in 2020** from the Met Council (electricity, natural gas, VMT, water use, solid waste, etc.) <https://metro council.org/Council-Meetings/Committees/Committee-of-the-Whole/2019/05-01-19/Creating-tools-for-Climate-Change-PPT.aspx>
- **Sample Strategy Lists for metro cities are coming in 2021** – This is a current priority for the Met Council's Board under their strategic priority on sustainability. This is also a deliverable in the work plan with the Met Council and the Center Healthy Sustainable Cities to develop a VMT scenario planning tool [www.sustainablehealthycities.org/](http://www.sustainablehealthycities.org/)
- **Executive Order 19-37 Establishing the Governor's Climate Sub Cabinet and Climate Advisory Council**
  - to co-create a statewide climate action plan in 2020 with policies and strategies that will
  - put MN back on track to meet our MN and the new U.N. climate goals - 50% by 2030 and 100% by 2050

**WHO CAN HELP** - GreenStep advisors and state agency, NGO and U of MN staff helping cities to develop their climate/adaptation/resilience goals strategies and action plans

- **State Agencies** – MPCA GreenSteps, Met Council, MN Dot Office of Sustainability, etc.
- **NGOS** – GPI (Brian & Abby) AforS (Sean G. & Jim Erkel), Blue Dot (Ted) CEE Partners in Energy, etc.
- **U of MN** – CERTS, Energy Transition Lab, Climate Smart Municipalities, Resilient Communities Project, Healthy, Sustainable Cities, Center for Changing Landscapes, Center for Sustainable Building Policies, MN Design Center
- **Interested cities** that have a lot of momentum
- **Interested Counties** (Hennepin, Ramsey, Washington)

**Current Resources we can compile the sample strategy maps for cities**

- **GreenStep City Best practices** [www.mngreensteps.org](http://www.mngreensteps.org) and **Equity Analysis**
- **Greensteps Ordinance directory** <https://greenstep.pca.state.mn.us/page/ordinances>
- **Legislative requirement** for the MN EQB to updated model sustainable development ordinances for MN cities every ten years. <https://www.eqb.state.mn.us/sustainable-development-act-1996>
- **EQB CSEO and Adaptation reports** – categories for action [www.eqb.state.mn.us/content/climate-change](http://www.eqb.state.mn.us/content/climate-change)
- **LoGoPEP energy scenario planning wedge tools** <https://www.regionalindicatorismn.com/energy-planning>
- **Partners in Energy** [https://www.xcelenergy.com/working\\_with\\_us/municipalities/partners\\_in\\_energy](https://www.xcelenergy.com/working_with_us/municipalities/partners_in_energy)
- **MNDOT low carbon pathways Study** <http://www.dot.state.mn.us/sustainability/pathways.html>
- **U of MN 2008 Study low carbon transportation strategies for MN** <http://www.cts.umn.edu/Publications/ResearchReports/reportdetail.html?id=1626>
- **New EV resources for cities from GPI** <https://www.driveelectricmn.org/communities/>
- **Resilient Cities and Communities Coalition (RCCC)** Cities teaming up by county to implement their energy/ climate/resilience action plans together in partnership with County staff and NGO topic advisors [www.allianceforsustainability.com/resilientcities](http://www.allianceforsustainability.com/resilientcities)
- **Planning for Resilient Cities Workshop Resources Thursday, June 20, 2019, Roseville** <http://allianceforsustainability.com/resilientcities->
- **HighImpact Policy Options for Low-Carbon Cities1** (developed by Phil Muessig)
- **Met Council 2040** – resilience <https://metro council.org/Handbook/Plan-Elements/Resilience.aspx>
- **Climate Vulnerability Assessment tools** (heat maps, flooding, <https://metro council.org/CVA>)
- **Essential Capacities for Urban Climate Adaptation: A Framework for Cities**, March 2017, developed by Innovation Network for Communities for the Summit Foundation by Peter Plastrik <http://lifeaftercarbon.net>

**Regional Collaboratives for Climate Change — A State of the Art**, April - 2019. Institute for Sustainable Communities. The report was created with support from the Kresge Foundation.

<http://us.sustain.org/wp-content/uploads/2019/04/Regional-Collaboratives-for-Climate-Change-FINAL-1.pdf>

Our RCCC leadership team is currently working to expand our partnerships with our long-term collaborators to strengthen the **Twin Cities Regional Collaborative for Climate Change**.

<p><b>Factors of Success</b></p> <ol style="list-style-type: none"> <li>1. Directly co-creating regional solutions through joint production</li> <li>2. Ongoing engagement with external stakeholders and communities</li> <li>3. Ensuring high value in member participation</li> <li>4. Investing in high-quality training &amp; tools and research &amp; analysis</li> <li>5. Organizing around strategic and specific climate plans or goals</li> </ol>	<p><b>Key Barriers and Gaps in Capacity</b></p> <ol style="list-style-type: none"> <li>1. Lack of funding and resources for staffing work, specifically for stakeholder engagement</li> <li>2. Lack of success in public communication about climate issues and collaborative work</li> <li>3. Lack of success in integrating climate goals and commitments into operations and investments</li> <li>4. Gap between current research and analysis and the scale needed to make a regional impact</li> </ol>
---	---

## Let's Create Sample Strategy Maps for Cities to Achieve Their Climate & Resilience Goals

Let's also be ready to provide MN cities with easy to use on line dashboard tools to empower city teams (staff, elected leaders, commissions) to easily see and manage their city level and community-wide actions from 2020 to 2030 to meet their resilient goals → planned actions 3 years → who (city staff, partners) is doing what, when → outcomes & impacts

**Tracking Actions and Outcomes within City Operations** - In 2020 the **Office of Enterprise Sustainability** <https://mn.gov/admin/government/sustainability/> will provide MN cities access to their new project management/results dash board tool that is now being tested by state agencies

**Tracking Community-wide Actions and Outcomes** – let's find one or more tools to make it easier for city staff, elected leaders and commission volunteers to track actions and progress to achieve **community wide GHG reductions** (buildings, transportation, energy supply, etc.) over the **next 10 years**. Ideally the Met Council would provide cities their GHG data, sample strategies to reduce GHG and a simple tool to track actions and progress.

- **High level goals** – where do we want to get to – low carbon electricity, buildings, transportation
- **Sample strategy maps** that cities can modify with the
- **Stakeholder & strategy management** - who (city staff, partners) is doing what, when
- **Indicator Dashboard** - annually updated city-wide GHG to be provided by the met council

Let's explore using the **Insight Vision Platform** <https://www.insightformation.com/insightvision> (developed by a St. Paul-based social venture) is a nationally-recognized, on-line strategy management platform now being used being used very successfully by other states and counties across the U.S.

**Minnesota coalitions** that are beginning to use this shared implementation management platform

- **Project Got Your Back** The use of InsightVision has been licensed by the Minnesota Veterans & Military Exchange ([www.mnme.us](http://www.mnme.us)), is a not-profit coalition <https://projectgotyourback.org/about-us/>
- **Launch MN** is exploring with Collectivity about using this platform <http://www.launchminnesota.org/>

## Partnership Invitation with the Climate Sub Cabinet to Support City Level Action

**Laura Bishop, Commissioner**  
**Minnesota Pollution Control Agency,**  
**520 Lafayette Rd, St Paul, MN 55155.**  
(651) 757-2014 [laura.bishop@state.mn.us](mailto:laura.bishop@state.mn.us)

Dear Commissioner Bishop,

We are excited to work with you and the Governor's **Climate Change Subcabinet and Climate Advisory Council**

- **to co-create a statewide climate action plan in 2020 with** policies and strategies that will
- put MN back on track to meet our MN and the **new U.N. climate goals - 50% by 2030 and 100% by 2050**
- by implementing **Executive Order 19-37** Governor Walz announced in December

**Please create topic work teams, organize regional listening sessions and establish transparent implementation partnerships** with mutual accountability that welcome the participation of interested citizens, NGOs, U of MN, cities, businesses to collaboratively develop statewide, regional and local action strategies that

**Cover all GHG sources** – energy, buildings, transportation/land use, agriculture & **local climate resilience**

**Include equity analysis** to overcome racial disparities by increasing economic opportunities

**Empower cities** to take high impact actions and **empower regions** to implement locally relevant solutions

Sincerely,

Name

Address

Email